

Asset Performance Manager

January 2022

Here at Incommunities we have ambitious growth plans with a target to develop 2000 new build homes by March 2026. We're expanding the capacity and capability of our development team to deliver our new build and shared ownership sales programmes.





Role Profile

Asset Performance Manager

About us

We are social housing landlord and think our vision of Improving Lives Incommunities says it all!

Working to provide great homes in great neighbourhoods, we manage more than 22,600 homes across Yorkshire – predominately in the Bradford district – and are proud to collaborate with our customers, communities, local and national stakeholders to achieve this.

Incommunities was formed from a stock transfer from Bradford Council in 2003 and in 2015 Huddersfield-based Black, Asian and Minority Ethnic housing association Sadeh Lok joined us. We have a turnover of around £100 million, a talented workforce of approximately 1000 staff, and we're growing!

Our values are at the heart of everything we do, inspiring our thinking and guiding our plans and actions. This year will see us focus on the first year of a 2 -year plan, to 2024. Our plan puts customers at the heart of what we do, providing great places to live and work, with homes that they are proud to live in.

Our renewed commitments to developing new good quality homes enables us to play our part in addressing housing supply issues in the communities we serve. We will also continue to invest in our existing homes to ensure they are meeting the needs of our customers.

We are striving to do everything we can to ensure we are an inclusive organisation,

Our workforce is representative of our customer base and we are a workplace where everyone can feel at home.



About us

Equity, Diversity and Inclusion

We proactively seek people to come and work with us from all backgrounds. We whole heartedly believe in difference and we welcome and need people bringing different experiences and perspectives. We provide an experience where our colleagues feel able to be themselves.





Role Profile

Asset Performance Manager

Incommunities: vision, mission, and priorities

We are social housing landlord Incommunities and think our vision Improving Lives Incommunities says it all!

Working to provide great homes in great neighbourhoods, we manage more than 22,600 homes across Yorkshire – predominately in the Bradford district – and are proud to collaborate with our customers, communities, local and national stakeholders to achieve this.

Incommunities was formed from a stock transfer from Bradford Council in 2003 (as Bradford Community Housing Trust Group) and in 2015 Huddersfield-based Black, Asian and Minority Ethnic housing association Sadeh Lok joined us. We have a turnover of around £100 million, a talented workforce of approximately 1000 staff.

Our Vision

Improving lives Incommunities.

Our Mission

Incommunities aspires to be a leading provider of smart affordable homes for the north. Incommunities will act as a catalyst and work in partnership to deliver homes and sustainable communities where people want to live and work.





Role Profile

Asset Performance Manager

Our Priorities





Role Profile

Asset Performance Manager

Why work for us

At Incommunities we offer jobs with real social purpose. You'll be part of a multi-skilled workforce dedicated to providing great homes, communities and services, all whilst achieving your own goals of developing as a person, colleague and team player too.

We want everyone to feel empowered to bring their best self to work – that's why we provide opportunities to develop and grow, lots of flexibility and great benefits so we can support you in your life and your career.

We know inclusion is not just about considering protected characteristics, such as disability, gender, age or sexuality, it's about embracing the differences of thought, experience and perspectives of everyone and we are working hard to ensure all colleagues feel they belong.

As a Mindful Employer we have committed to working towards better mental health in the workplace and are determined to deliver a culture of physical and mental wellbeing openness and support.





Role Profile

Asset Performance Manager

As your employer we can offer you:

- Training, development, and qualification opportunities
- Corporate health scheme membership
- Access to an Employee Assistance Programme
- West Yorkshire Pension Fund membership
- Excellent holiday allowance
- Cycle to work scheme





Role Profile

Asset Performance Manager



What you will do

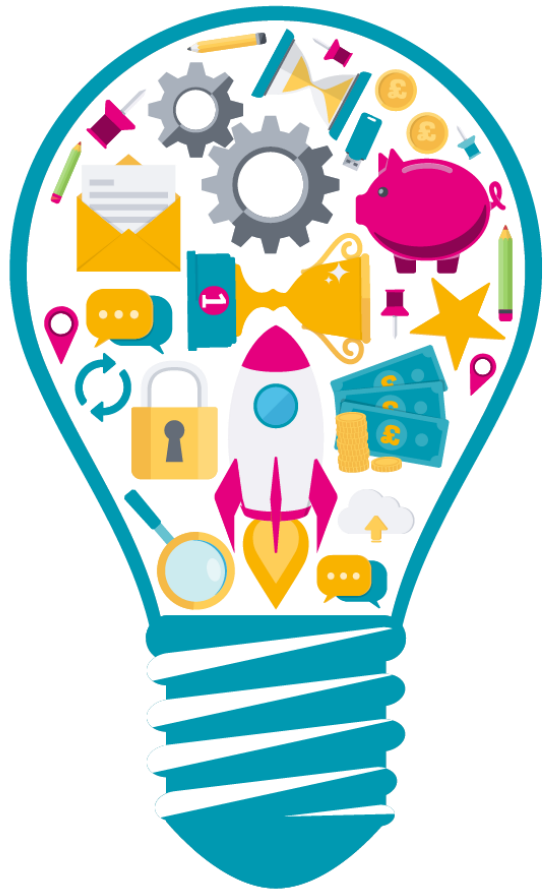
- To be responsible for the quality of the Groups asset data and performance information
- Coordinate the approach to asset performance management, leading on the development and presentation of performance reports, benchmarking activities and value for money assessments.
- Utilising performance data, contribute to the development, preparation and review of the Groups asset management policies, projects and services.
- To collate annual investment and cyclical maintenance delivery plans.
- To collate information to inform Incommunities business plan, 5 year investment plan, Incommunities Sustainability strategy and annual budgets.





Role Profile

Asset Performance Manager



About you

You will be a star performer in this role if you have...

- Analytical, literacy and numeracy skills sufficient, interpret, compile and produce performance reports.
- Understanding of performance indicators and their purpose.
- Understanding of Data Quality principles
- GCSE Maths and English or equivalent and/or relevant business or ITC qualifications

Role Profile

Asset Performance Manager

What you will bring

- Good analytical skills with the ability to analyse financial statistical data and present findings.
- Ability to identify, retrieve and interpret information from a variety of sources to produce reports to multiple audiences
- Experience of managing data and maintaining accurate records of works orders and procedures which support the business
- Excellent knowledge and skill of ICT solutions and configuration impact on data quality and analysis.
- Experience in managing teams

